

News Update

September 2019 Newsletter

Light rail works kick off at Westmead



The Westmead Precinct will have access to Parramatta Light Rail services from 2023, with works starting on Hawkesbury Road in preparation for Parramatta Light Rail construction.

Hawkesbury Road in Westmead will be widened to create room for one lane of traffic to run on either side of the new dual-track Parramatta Light Rail, which will connect Westmead to Carlingford via the Parramatta CBD and Camellia and is expected to open in 2023.

These essential road widening works by Transport for NSW, in association with the \$1 billion Westmead Redevelopment, are part of the plan to build the Parramatta Light Rail that will transport the many new workers,

students and visitors attracted by the dynamic innovation precinct, projected to include more than 40,000 full-time staff and more than 30,000 students by 2036.

Between Darcy Road and Jessie Street in Westmead, the road widening works will include the relocation of utilities and parking; new footpath, street lighting and landscaping; footpath improvements; the removal of roundabouts, median strips and median kerbs; and the trimming or removal of some trees, as well

as the planting of new trees as part of the Parramatta Light Rail tree planting and bushcare program.

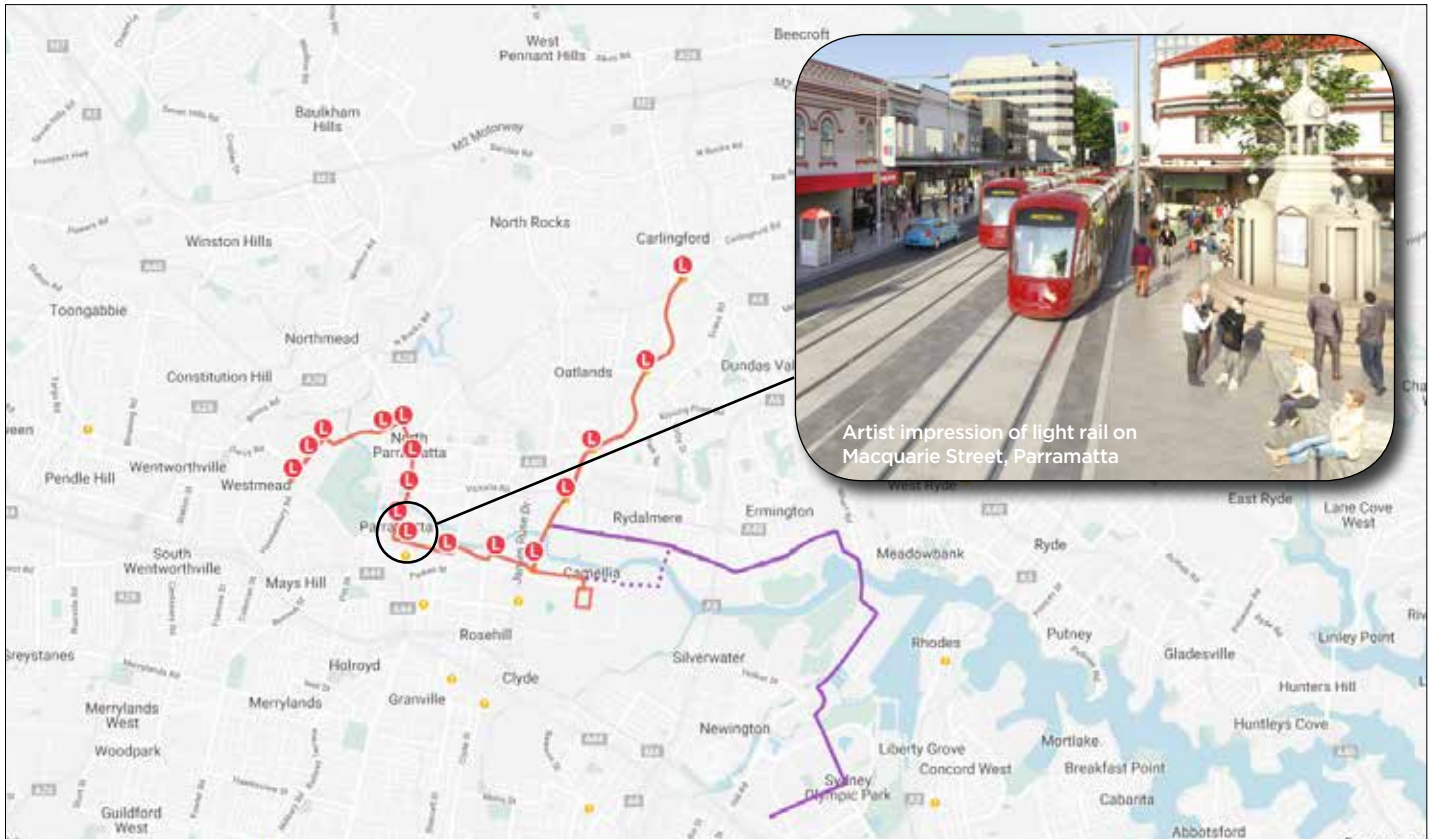
The Parramatta Light Rail will start and end its journey at the Westmead Terminus, with eight light rail 'turn-up-and-go' services an hour – every 7.5 minutes on weekdays between 7am and 7pm, and every day until late.

Transport for NSW is committed to keeping you updated. Find out the latest news and works updates at www.parramattalightrail.nsw.gov.au.

Find out more at

www.parramattalightrail.nsw.gov.au

Clicking into place: new interactive map



Parramatta Light Rail's new interactive map is up and running at www.parramattalightrail.nsw.gov.au/map/parramatta. Visit our website and click on the proposed future light rail stops to see what destinations and attractions are nearby.

Light rail chief to lead Parramatta program

The Parramatta Light Rail program is thrilled to welcome Anand Thomas (right) as its new Program Director. Anand led the successful delivery of the Newcastle Light Rail as part of the Newcastle Urban Transformation and Transport Program, and looks forward to playing an integral role in building the \$2.4 billion light rail network for Greater Parramatta. The Parramatta Light Rail program will also deliver a five-kilometre walking and cycle path, new bridges and road network upgrades. "This is an exciting time for the community as we realise the vision of the 30-minute city in Western Sydney," he says.



Trees for the kids

To celebrate School Trees Day recently – part of National Tree Day – the Parramatta Light Rail project donated four native Australian lemon myrtle trees to Parramatta North Public School for the kids to enjoy.

The children will be able to take shelter under the canopies as they grow, and use the leaves for cooking in cakes, biscuits, homemade lemonades and tea!

The tree planting is part of Parramatta Light Rail's tree planting program, which will see more than 3500 trees planted as part of the project. These trees will make the local environment significantly greener and help to offset any trees removed as part of the light rail construction. For every tree removed, around four trees will be planted in its place.

Visit www.parramattalightrail.nsw.gov.au/trees.

Construction update – what’s happening?

Investigation works for the \$2.4 billion Parramatta Light Rail that will connect Westmead to Carlingford via the Parramatta CBD and Camellia are well underway.

It’s part of our commitment to early planning to help ensure a successful and brief-as-possible construction period. Looking ahead until December, site investigations are scheduled along the 12-kilometre alignment, covering Westmead, the Parramatta CBD and Camellia to Carlingford. By taking the time to clearly identify underground services (such as gas, water, or Telstra lines) we aim to minimise delays and prepare for the relocation of services to allow space for light rail tracks.

In North Parramatta and around the CBD, road works are ongoing to update local area traffic networks in readiness for Parramatta Light Rail construction. ‘Enabling works’ is the term used for construction works such as the relocation of underground utilities, the modification or installation of traffic lights, road widening, the redirection of traffic flows and changes to parking. Most of the Parramatta Light Rail enabling works are intended to upgrade roads and increase road capacity to make it easier for traffic to move in and around the Parramatta area. Find out more about where we will be each week at www.parramattalightrail.nsw.gov.au/weekly-works.



Above: a crew from Parramatta Light Rail delivery partners CPB Downer Joint Venture undertakes site investigation works in Parramatta.



Above: underground utilities investigations in North Parramatta as part of the Parramatta Light Rail ‘enabling’ road works.

Deals, discounts and dining in Parramatta

The fun continues as part of Parramatta Light Rail’s ‘Enjoy Game Day on Eat Street’ campaign. People attending games at Parramatta’s Bankwest Stadium will receive discounts and deals at the popular ‘Eat Street’ dining precinct as part of a campaign to attract more visitors to the area. Visit www.activateparramatta.com.au for the latest deals and discounts.





What's next?

Mid 2019

- Site investigation works underway
- Enabling road works underway
- Remediation works continue at future depot
- Road widening works begin at Westmead

2020

- Eat Street construction works begin
- Major construction begins across the Parramatta Light Rail alignment

2023

- Light rail commences operations

Looking back...

The disused Sandown railway line in Camellia, NSW, will be revitalised as part of the Parramatta Light Rail project, connecting the main alignment with the future Stabling and Maintenance Facility at Camellia.

The old railway line started life as the Bennett's Railway, with the first services linking Clyde to the Camellia peninsula in 1888. In its heyday, the Sandown Line had four platforms and several sidings to move workers and goods to and from the industrial factories around Grand Avenue. Passenger services ended in the early 1990s and freight services ceased in 2010.

Removal of the existing railway line along the disused Sandown Line began in July, in preparation for the installation of Parramatta Light Rail tracks.



Photo (c) Oakes, J. *Sydney's Forgotten Industrial Railways* (2011). 2nd ed. New South Wales, Australian Railway Historical Society, p.180.

Check dates and times at

www.parramattalightrail.nsw.gov.au

Free advice for local biz

More than 100 Parramatta small businesses have signed up to free business mentoring from advisory service Realise Business, engaged by Transport for NSW to support local businesses before and during construction of the Parramatta Light Rail. Businesses along the light rail route are encouraged to get in touch to discuss opportunities specific to your circumstances. Best of all, it's free! Find out more at www.parramattalightrail.nsw.gov.au/businesses.



Above: Penny Redmond (left) and Katherine Owens from Telopea florist Posy & Twine have signed up to receive free business support services.

Like us on Facebook



Jump on board and 'like' Parramatta Light Rail at www.facebook.com/ParramattaLightRail



Translating and Interpreting Services

If you require the services of an interpreter, please contact the Translating and Interpreting Service (TIS National) on 131 450 and ask them to telephone Parramatta Light Rail on 1800 139 389.

Arabic

إذا كنت بحاجة إلى مترجم، فيرجى الاتصال بخدمة الترجمة والترجمة الفورية (TIS National) على الرقم 131 450 واطلب منهم الاتصال بالسكك الحديدية الخفيفة بباراماتا (Parramatta Light Rail) على الرقم 1800 139 389

Traditional Chinese

如果您需要一位口譯員，請撥打131 450 到筆譯與口譯服務Translating and Interpreting Service (TIS National)，要求他們撥打Parramatta輕軌 (Parramatta Light Rail) 的電話1800 139 389

Simplified Chinese

如果您需要一位口譯員，請撥打131 450 到筆譯與口譯服務Translating and Interpreting Service (TIS National)，要求他們撥打Parramatta輕軌 (Parramatta Light Rail) 的電話1800 139 389

Hindi

यदि आपको दुभाषिणी की आवश्यकता है तो कृपया अनुवाद व दुभाषिया सेवा (TIS National) को 131 450 पर फोन करें और उनसे कहें कि वह पैरामाटा लाइट रेल (Parramatta Light Rail) से टेलिफोन नम्बर 1800 139 389 पर फोन मिला दें

Korean

“통역사가 필요할 경우, 전화번호 131 450의 번역 및 통역 서비스 (TIS 내셔널)에 전화한 다음 1800 139 389로 파라마타 라이트 레일 (Parramatta Light Rail)에 전화해 달라고 요청하십시오.”

Find out more at

www.parramattalightrail.nsw.gov.au